

Willochra Creek, Melrose

Website: www.susanborgas.com

Thursday, April 06, 2006

Willochra Creek, Melrose (Work in Progress)

Work is 47.5cm high x 68cm wide.
Elephant Art Spectrum Colourfix

This spot is roughly about 20 minutes drive from where I live in the Southern Flinders Ranges. It is one of my favourite areas to paint.

I have spent some time at the drawing stage as well as made a tonal map to give me an idea of the course I would like to go. The tonal map is only for guidance and if need be I will change the design for a better painting.

So hop on board another WIP is about to start.



Willochra Creek, Melrose (Work in Progress) two

At the moment I am feeling my way with pastel application so that I get some of the paper covered. This is done lightly.

The mountain has purple and blue scraped on the paper then rubbed into the support. This will have numerous lighter tones laid over the top. I find this helps give me depth in the mountain rather than a flat expanse of area.

As you can see I did take the middle tree out that has the dark trunk. I felt that it was too centered and not good for the over all design.

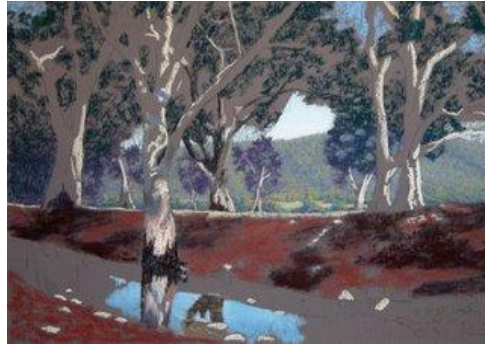


Willochra Creek, Melrose (Work in Progress) three

The mountain is near complete other than minor adjustments that maybe needed as the painting progresses. I also applied pastel to the sky above the mountain so that I could see the tonal values between sky and distant trees. I am reasonably happy with the resulting contrasts.

I have scraped on a thin layer of pastel in the foreground to stain the paper. I have used the warm red/brown tones to compliment the green layers that will be placed over the top. Also rocks and litter will come into play yet in these areas.

Even though it is Sunday tomorrow in Aussie land, I hope to have another posting by the end of the day. Best laid plans often can be interrupted though so I will see what happens.



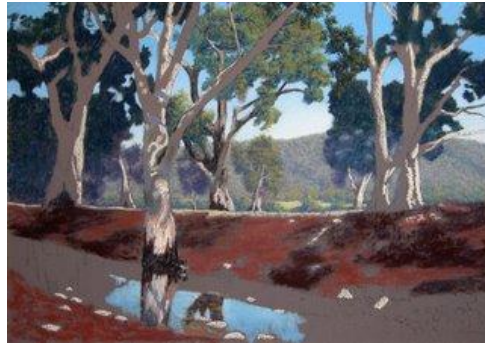
Willochra Creek, Melrose (Work in Progress) four

I put in the larger shapes of sky with further sky holes made at a later time when the tree canopies are finished.

Using darks, I stained the paper where the main bulk of the tree foliage will be.

After making a start on the tree foliage I felt that the mountain did need to be lightened, which I did with a pale mauve/purple colour.

Till next time, cheers!!!



Willochra Creek, Melrose (Work in Progress) five

I am rushing this post as I am yet to catch up with some mundane jobs. I will let you guys work out what I have done in this update..... catch ya soon.



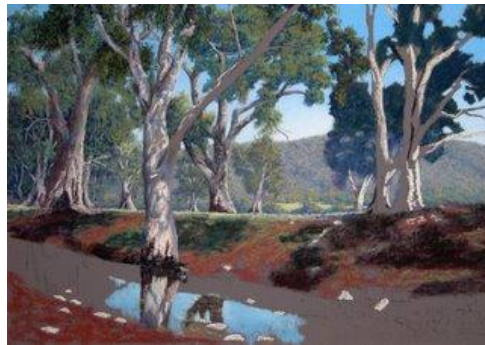
Willochra Creek, Melrose (Work in Progress) six

Between two lots of visitors and phone ringing here I did manage to get some work done. The top left quarter is now well on the way. It hasn't been easy to separate much of the foliage from the distance to the forward position but reasonably happy with the progress of this area. I still have sky holes to put back plus the twigs, which will be done at a later time.

I have posted a close up of the tree trunks in the thick area of growth so that you can see what is going on. I used short flat sides of the AS Australian grey as well as my reworked stick of Australian grey that had some other scraps of colour mixed in making a slightly pinkish colour. I scraped lightly picking up some of the under colour at the same time. The trick was to push slightly harder on the pastel from the direction of light so that the trunks look rounded because the opposite side of the pastel didn't bite so much leaving some of the under colour showing through. I then place a few more marks in appropriate places to add more form to the lower areas. My aim is to achieve a mysterious area of bush land that is common place in this region with thick growth.

I scraped some more colour along the bank though it does have a lot more work to be done.

Until next time, Cheers!!!



Willochra Creek, Melrose (Work in Progress) seven

Today I attacked the top right hand side of the painting. I strengthened up the bottom of these trees as I felt there wasn't enough width in the trunks to hold the tops upright. Mmmmmmm, starting to tire of tree trunks and foliage and glad to have the main parts of it done. Still have the twigs to put in place; that is a job for another day.

I glazed some colour over the banks of the creek making sure I don't completely cover the staining colour underneath. This area still isn't finished.

I called it a day when I dropped one of my favourite Unison colour. I could hardly believe my eyes when it happened but here is the proof of the pudding with an image further down below.



Willochra Creek, Melrose (Work in Progress) eight

Today I have worked on the rocks and creek bed. I have only ever painted transparent water with oils in the past and found it very interesting to use pastels to try and achieve the same thing. I hope to complete the water tomorrow as well as the bottom bank.

I did pick out some rocks that are more in focus and some not. As you will see with the close up shot they are in fact just layers laid over the top of each other allowing some of the under colour to show through. I always do keep in mind though the direction of light as well as reflective light.



Willochra Creek, Melrose (Work in Progress) Completed

Well the big question has finely arrived, is it finished???

Smaller branches and twigs have been placed in the trees as well as the odd sky hole. I spent quite a bit of time completing the water. The bottom left corner was quickly completed as I didn't want detail in this area though the pastel marks give a good impression of lots of litter on the ground.

For now it is more look than put. There maybe a tweak here and there but nothing major with no further posting on the blog with this work.

